



中国科学院国家天文台

NATIONAL ASTRONOMICAL OBSERVATORIES, CHINESE ACADEMY OF SCIENCES



SKA Activities in China

Xiang Zhang, SKA China

29 May 2012

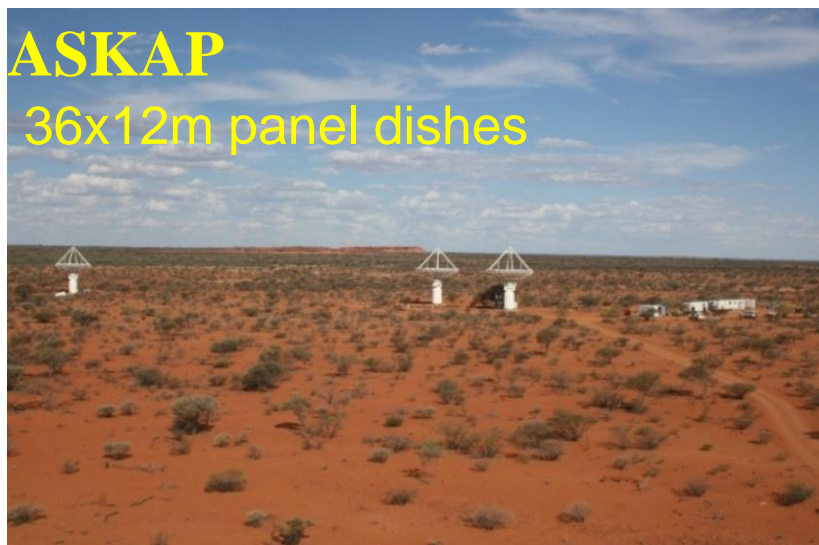
1. **SKA Organisation (SKAO) Full Member activities**
2. **Participate SKA Pre-cursors projects**
3. **SKA Dish Array WBS(Work Breakdown Structure)and SoW(Statements of Work)**
4. **SKA preparation discussions between NAOC, JLRAT & CSIRO**
5. **Key technologies research and development**

1. SKAO Full Member activities

- Meeting of Board of Directors (5 times)
- SKA General Meeting of Members (3 April 2012 and 25 May 2012)
- Site Selection
 - ✓ Member of Expert Panel: Assess the candidate sites based on scientific and technical criterias
 - ✓ Member of Site “Options Working Group”:
Evaluate the possibility of “dual sites” scheme
 - ✓ Voting director for siting
- SKA Funding Profile

2. Participate SKA Pre-cursors projects

- Construct 36 12m aperture dishes for ASKAP (Australia)
- Bid for MeerKAT (South Africa)



3. SKA Dish Array WBS/SoW

- Teleconference
- WBS/SoW workshop (30 January-3 February, 2012, Manchester)
- Draft China's Expression of Interest (EoI)



4. SKA preparation discussions between NAOC, JLRAT & CSIRO

- Reviewed understanding of Pre-construction phase work (2012 – 2016)
- Discussed the tasks which China has key interest
- Identified some major concerns

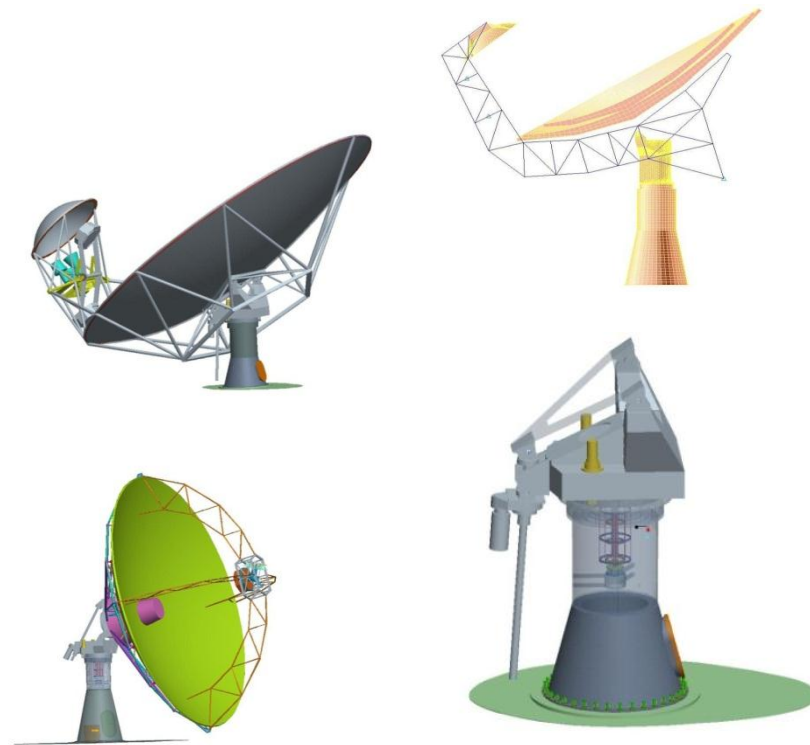
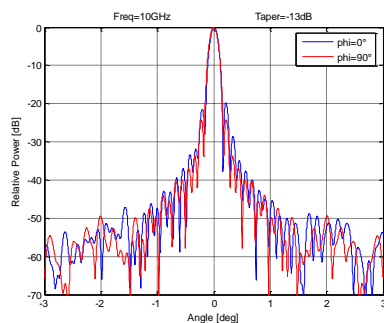
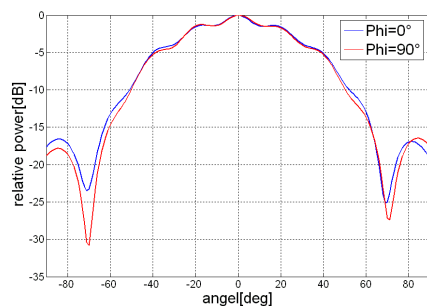
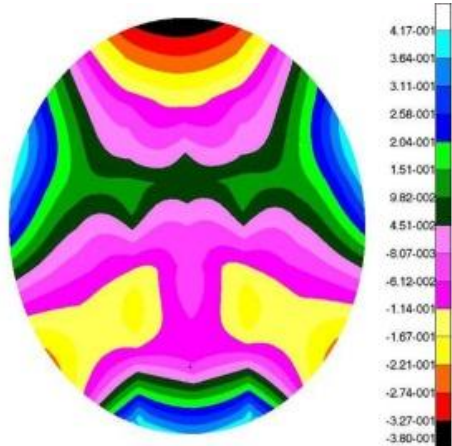


5. Key technologies research and development

- **Dish**
- **Phased Array Feeds(PAF)**

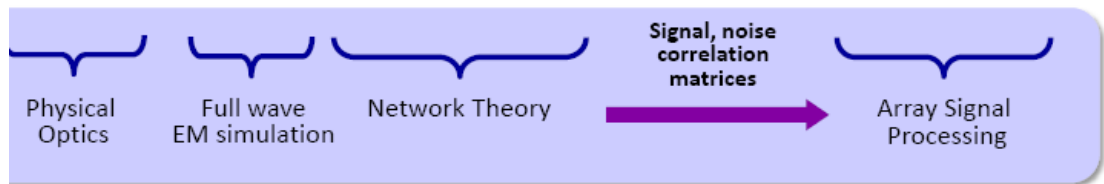
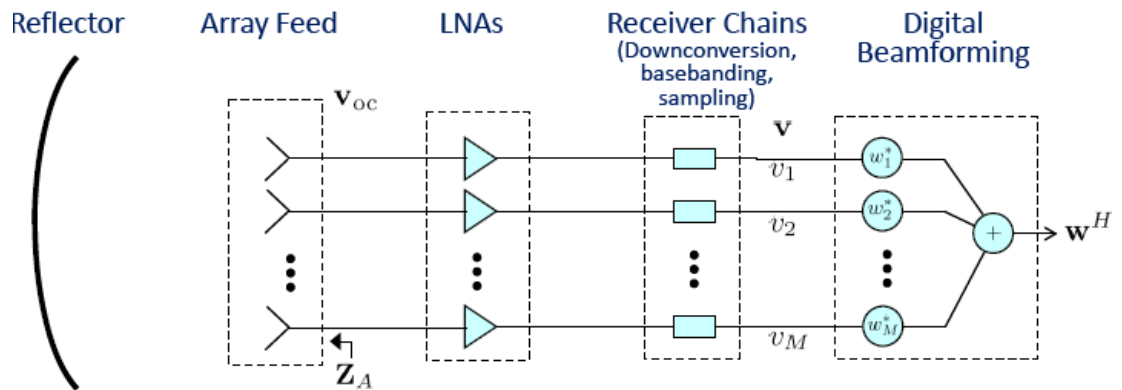
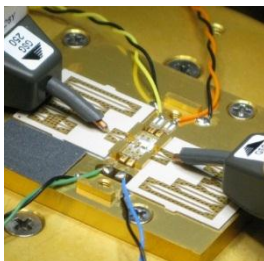
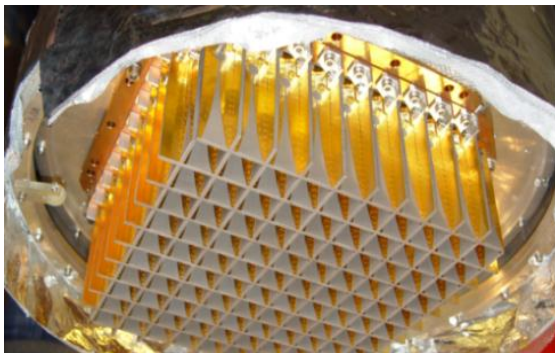
Dish

- Dish structural design
- Optical design
- Wide band feeds
- Local monitor & Control, Dish Executor



Phased Array Feeds (PAF)

- PAF for DVAC and other large single dish radio telescope
- Wish to be kept informed on the status of the research



Thank You!

- The Full Members should be divided into two parts: the **Host Premiers**, including the site host country and the SKAO host country; and the **Partner Members**, including the remaining Full Members
- 15% of the required funding should be undertaken by the SKAO host country, and at least 25% of the required funding should be undertaken by the site host country
- Each Partner Member's funding contribution rate should be at least 5%, but not exceeding 10%. The Host Premiers, especially the site host country should supplement the lack of funding